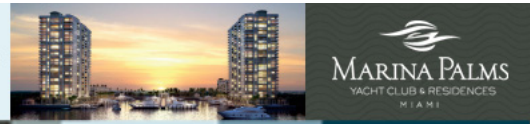


North Tower **Sold Out**  
**Now Selling** South Tower from the \$700s  
 855 868 6800 MarinaPalms.com



# Robb Report

eNewsletter Digital Editions

Search



St  
 \*ge  
 Cl

[Autos](#) [Aviation](#) [Boating](#) [Home & Style](#) [Travel](#) [Watches](#) [Leisure](#) [Fashion](#) [Jewelry](#) [Health & Wellness](#) [Real Estate](#)

HOME » LIFESTYLE & TRAVEL » LUXURY TRAVEL » SNEAK PEEK: ANDAZ PENINSULA PAPAGAYO, CULEBRA, COSTA RICA



## Sneak Peek: Andaz Peninsula Papagayo, Culebra, Costa Rica

Jennifer Ashton Ryan

JANUARY 20, 2014

Meet Costa Rica's newest beach resort: **Andaz Peninsula Papagayo**.

**Why Go:** Established in 1982, the private community of Peninsula Papagayo in Costa Rica's Guanacaste region encompasses more than 2,200 forested acres. A Four Seasons opened in 2004 on the tip of the jagged S-shaped peninsula, and Hyatt's seven-year-old Andaz brand welcomed its first guests to the resort, located at the base of the peninsula, in December. The community also includes an Arnold Palmer–designed golf course, 31 beaches, a 180-slip marina, and several housing developments. The Andaz offers direct access to two beaches, one dedicated to water sports and the other to peace and quiet.

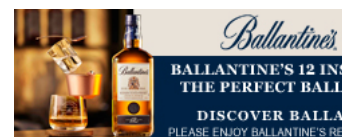
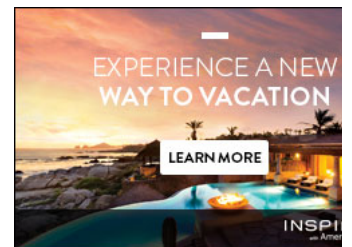
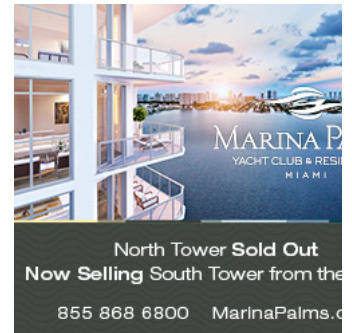
**What to Expect:** Enter the Andaz's open-air lobby to find no reception desk—a signature of the Andaz brand, which prides itself on being “uncomplicated.” Fittingly, the multistory hotel's 132 rooms (from \$450) are more basic than those at the Four Seasons down the road. They are all the same size with views of either the forest or Culebra Bay. The 21 suites are at least twice as large as the rooms, and all come with bathtubs and ocean views. At the spa, three of the nine treatment rooms have outdoors components; you can also enjoy outdoor dining at all three of the Andaz's restaurants.

**How to Get There:** The international airport in Liberia is a 25-minute drive from Peninsula Papagayo and receives direct flights from eight U.S. cities. The Papagayo Marina accommodates yachts up to 220 feet and there is an area where a helicopter can land near the community's entrance gates. (+506.2690.1234, [www.andazpapagayo.com](http://www.andazpapagayo.com))

[Read Similar Articles >>](#)

[Read Next Article >>](#)

[Travel](#) [Destination Spa](#) [Resort](#) [Andaz Peninsula Papagayo](#)



On Newsstands Now!